

Culture, Identity and Socialization





What is Culture

A way of life of people that involves norms, traditions and beliefs of a society.

Characteristics of culture

- It is learned
- It is shared
- It is dynamic rather than static
- It is transmittable



Two Types of Culture

Material Culture

- The physical or tangible creations that members of a society make, use and share.
 - Look around the room. What judgments can you make about our society simply based on the material culture located here?
 - Examples of material culture that are important to you?

Non-Material Culture

- The abstract or intangible human creations of society that influence people's behavior.
 - Language, beliefs, values, rules of behavior, family patterns and political systems.
 - Beliefs are most important – what are some beliefs our society holds?

High vs Low Culture

High culture – things like opera and ballet that are seen as more higher class, expensive, upper crust

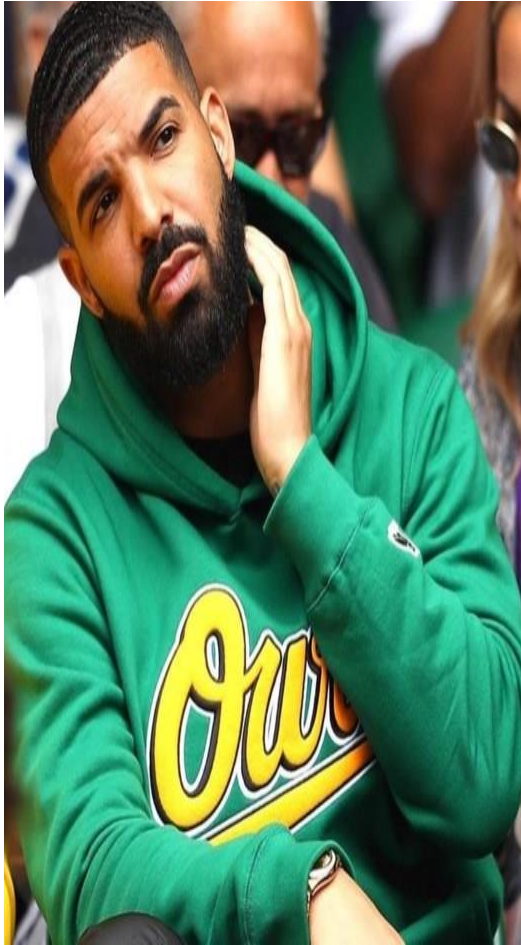
Low culture – activities that everyone has access to such as sports, rock music, etc

- Mass media has made high culture activities more available to everyone through TV, the internet, etc

High culture



Pop Culture



MASS CULTURE



SUBCULTURE

A cultural group within a larger culture, often having beliefs or interests at variance with those of the larger culture.

TYPES Of SUBCULTURE

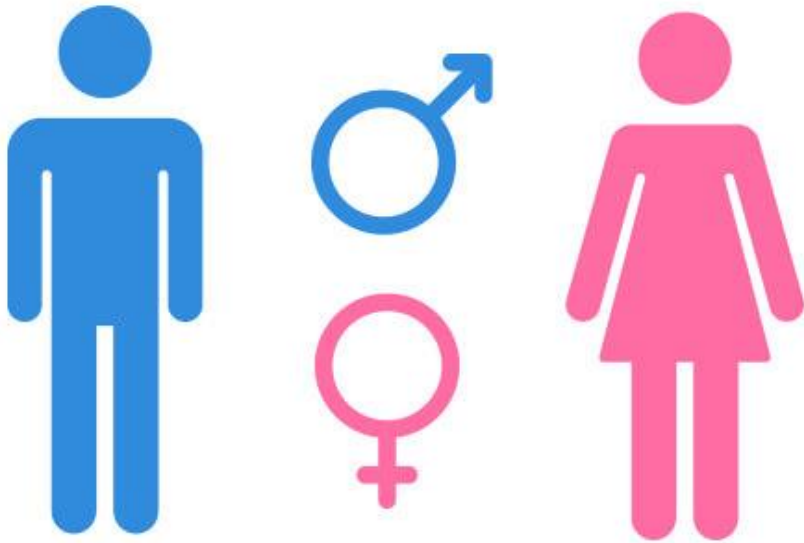
- **Ethnic minority subculture**
- **Youth subculture**
- **Male female subculture**

identity



GENDER

The state of being male or female typically used with reference to social and cultural differences rather than biological ones.



- Society attaches certain rules and limitations when describing gender based roles
- Both males and females have to comply to those rules

Race and Ethnicity or ethnic identity

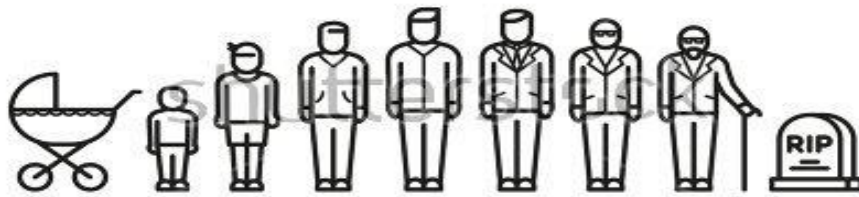
Ethnic identity is defined as a sense of belonging based on common racial, national, religious, linguistic, or cultural heritage.



Ethnicity and Subculture



Indian Movie : “English Vinglish”



Age

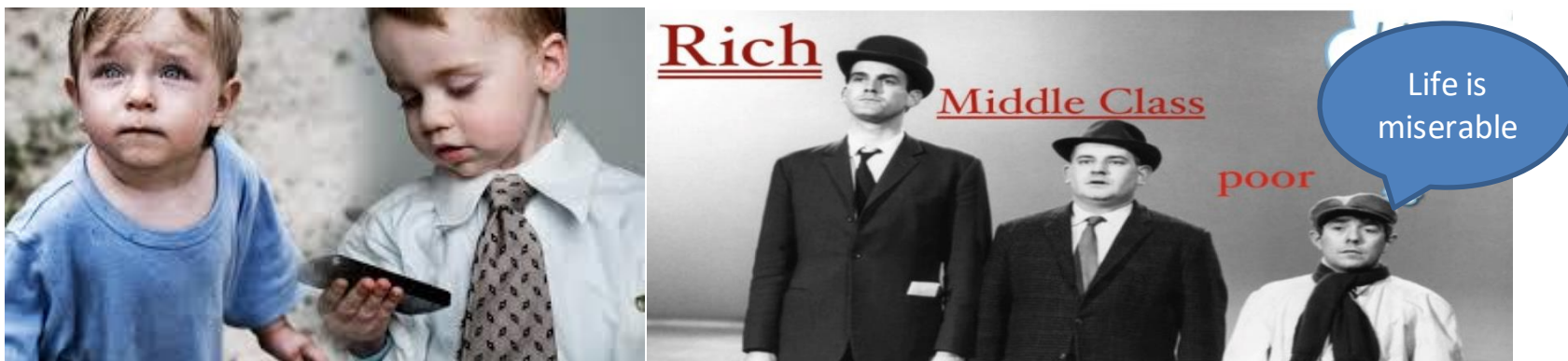
www.shutterstock.com · 623023922

Age of an individual is perceived in Sociology as an important determinant in explaining the contribution of society to that individual or how that individual can benefit the society.

IMPORTANT AGE GROUPS

- Childhood
- Adolescence
- Adulthood
- Middle age
- Old age

Social Class



A group of people considered as a unit in society according to their economic, income or occupational positions.

Important class divisions

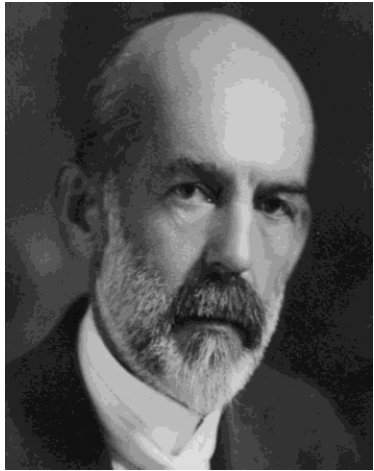
- upper class
- middle class
- working class

Perspectives on self and Identity

The Looking Glass Self

by

Charles Horton Cooley



Charles Horton Cooley (1864-1929)

“looking-glass self”

- Describes the process of how a person's sense of self develops from interactions with others.

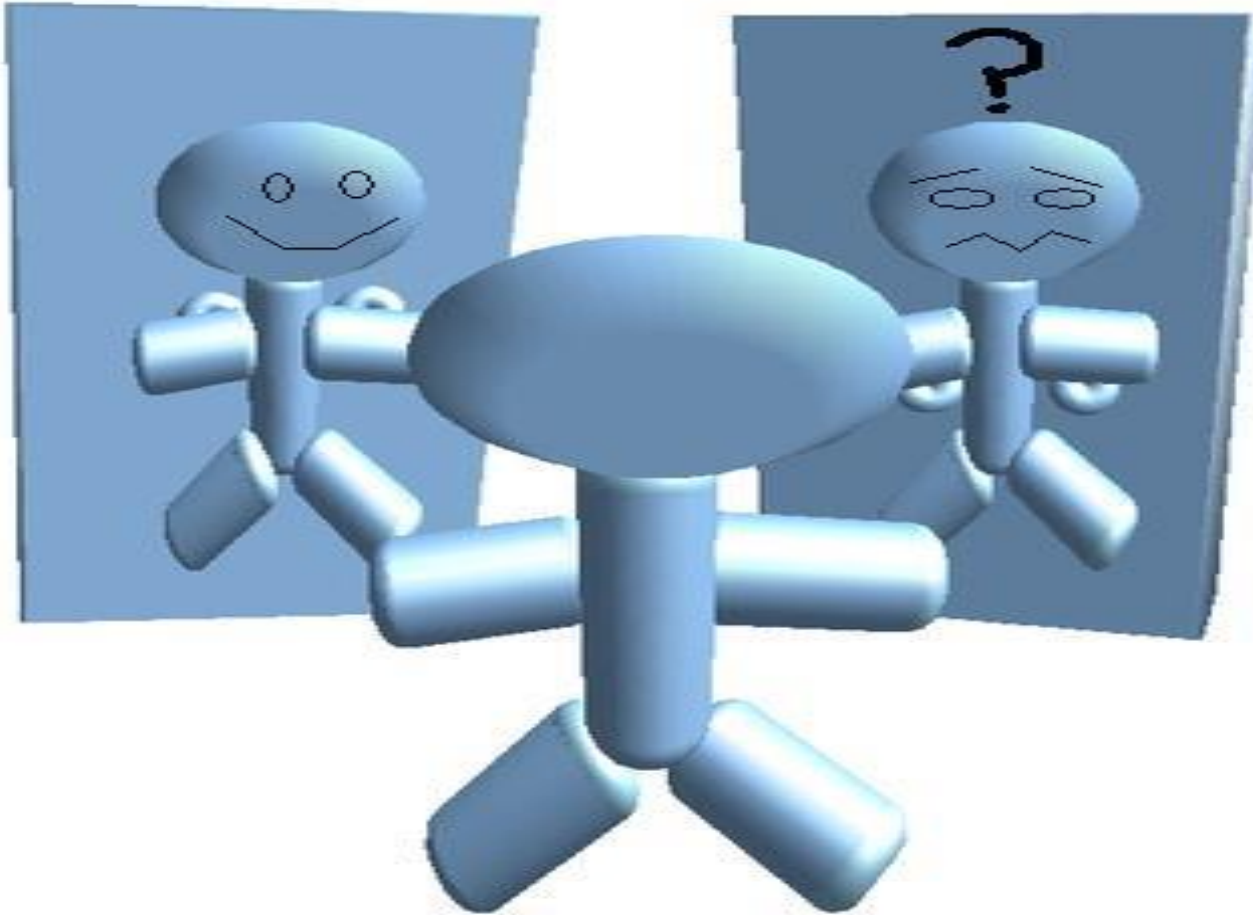
Involves 3 steps:

1. we imagine how we appear to those around us
 2. we interpret other's reactions
 3. we develop a self concept
- If perceive as favorable = positive self concept
 - If perceive as less favorable = develop negative self concept
 - ***Always in a state of development as that person modifies their self.***

The Looking Glass Self

How people from my country see me.

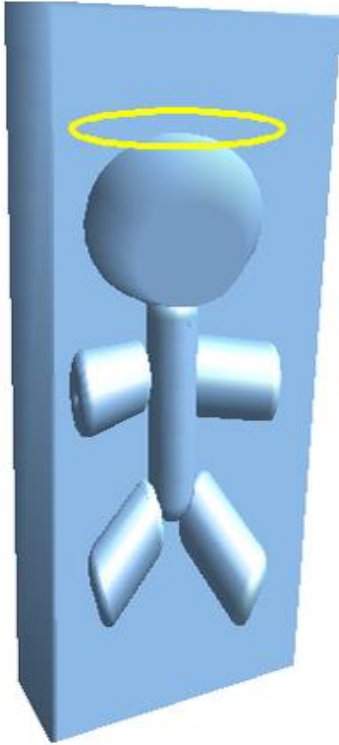
How people from my new culture see me.



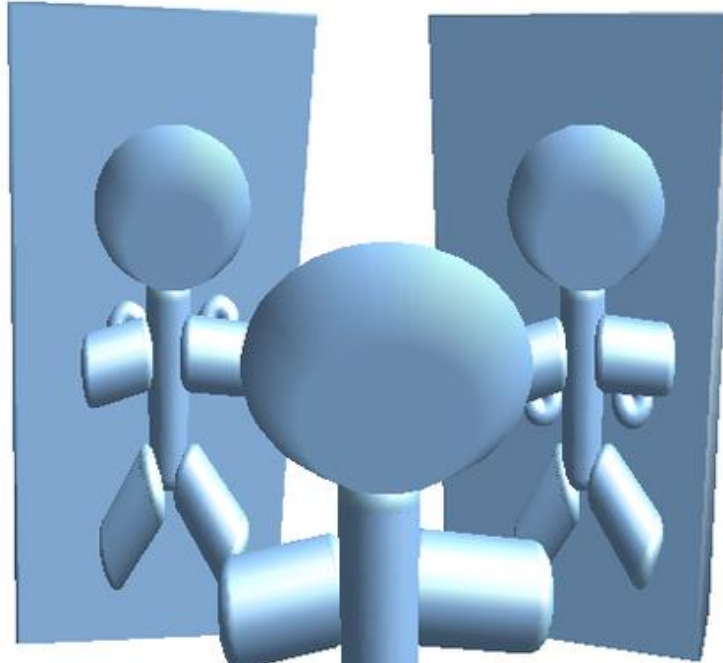
How we may think others see us when living abroad.

The Looking Glass Self

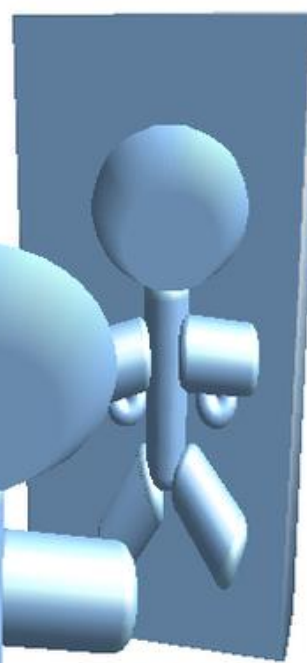
How my mom and dad see me.



How my girlfriend sees me.



How my older brother sees me.



How my ex-girlfriend sees me.

